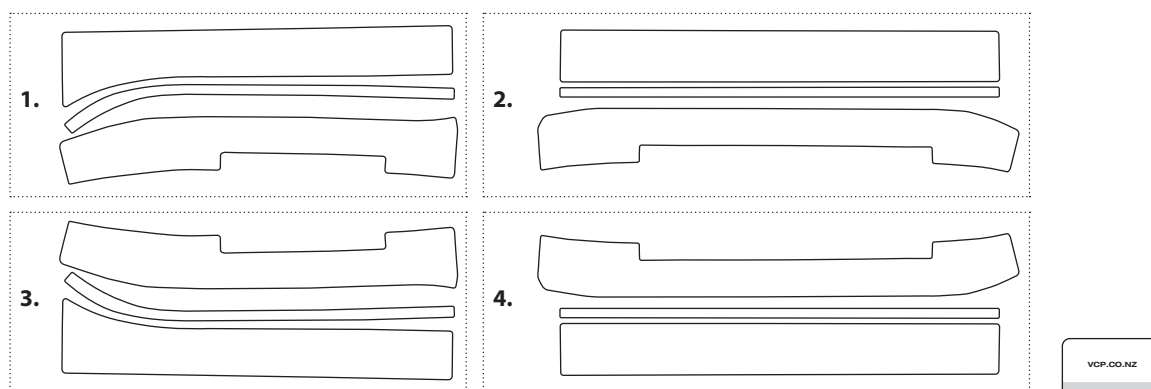


### TOYOTA HILUX DOOR SILL PROTECTION KIT All Models 2015 onwards

#### WHAT YOUR KIT CONTAINS

Your Toyota Hilux Paint Protection Film (PPF) Kit should contain the following:

- 1x SunTek PPF-C (Clear Gloss) CAD Cut Left Rear Door Sill Protection Pieces (3 of) - No.1
- 1x SunTek PPF-C (Clear Gloss) CAD Cut Left Front Door Sill Protection Pieces (3 of) - No.2
- 1x SunTek PPF-C (Clear Gloss) CAD Cut Right Rear Door Sill Protection Pieces (3 of) - No.3
- 1x SunTek PPF-C (Clear Gloss) CAD Cut Right Front Door Sill Protection Pieces (3 of) - No.4
- 1x Squeegee with SuperSlik Edge Tape



**Please check before going any further that this kit is for the correct Model and Year of vehicle that you have intended this application for. If you have any concerns as to quality or fit of this kit please contact VCP NZ before continuing.**

#### FITTING INSTRUCTIONS

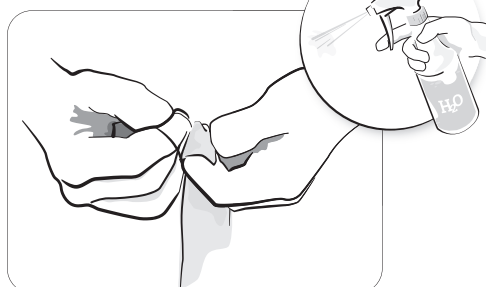
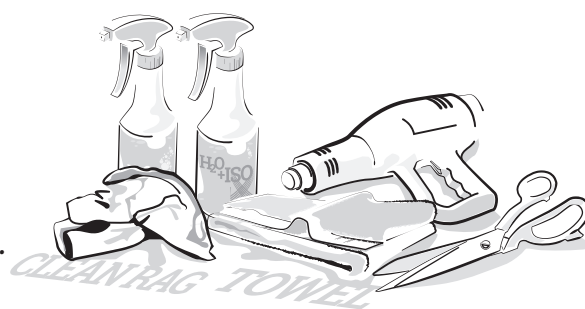
Please take note of all of the following for best results:

- **Please read the complete instructions before continuing your application.**
- **Prior to fitting this kit the vehicle should be cool and out of direct sunlight, preferably in a wind still area.**
- **Do not use any harsh cleaners or abrasives on the vehicles surface.**

You will may also need depending on application:

- Mist Sprayers containing just water, or a combination of water and Baby Shampoo mixed at a ratio of 4 drops per liter of water
- Mist Sprayer containing water and Isopropyl Alcohol mixed at a ratio of 10ml per litre of water
- Clean Rags
- Heat Gun
- Scissors or Art Style Knife
- Nitrile Gloves
- Clean Dry Towel

**Note: Isopropalene Alcohol and water mixed at a ratio of 10% Isopropalene Alcohol and 90% water is helpful in aiding to tack down the protection film if needed. Nitrile gloves are also recommended for fitting PPF.**



Spray both of your hands and surface of PPF with water before removing from backing and positioning onto vehicle.

### Preparing Sills for Door Sill Protectors

With the back of the supplied Squeegee (not the SuperSlik taped edge) or by using your finger tips, gently prise up the plastic Toyota Abrasion Protection Plate and remove to expose the entire sill as pictured. This will be required for all sills to be fitted with sill protection.

Making sure your hands are free from grease and dirt, clean and prepare vehicle as previously described.

### Preparing Vehicle Surfaces

Thoroughly clean the area of your vehicle intended for application of PPF film.

Make sure that the surface is totally clean from debris, stains and any loose residue, as they will otherwise become trapped between the paint protection film and vehicle, giving you a less satisfactory finish. We recommend cleaning with your usual car grooming wash from the top most part above where you will apply this application. Continue on downwards past where the protection film finishes so that all parts are clean in the intended application area. If paint work has nobs or rubbish in the finish it may need light claying to give a smooth layer for your application.

Re-clean the area with your water/soap mix followed by ISO (Isopropyl Alcohol) solution as this will help ensure getting rid of any stains plus help ready the surface for bonding with the paint protection film.

### Handling of your PPF Protector kit

Before removing PPF film from the backing paper, spray both of your hands liberally with your water and baby shampoo solution as pictured on page 1. This helps clean your hands for handling the PPF, as well as helping to minimize any finger marks you could possibly put on to the adhesive surface (whilst removing PPF from backing and positioning on vehicle). Spray the area of the vehicle where you'll be placing PPF. Spray the PPF with water and baby shampoo solution before separating from backing to help keep PPF clean, as well as helping in keeping PPF from adhering to itself. Keep your water and baby shampoo solution at hand. Carefully peel the backing away from PPF and as you expose the adhesive side of PPF, spray this side also with the water and baby shampoo solution (Fig 1.).

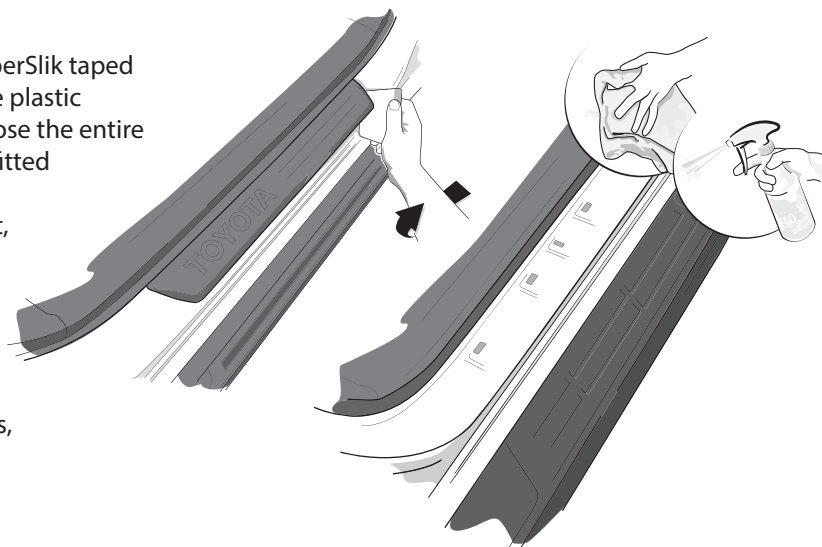


Fig 1.



Spray adhesive side with water and soap solution stripping back adhesive layer as you go.

### Installing Front Door Sill Protectors

**1.** Starting with the main sill area piece of your 3 piece set for the Front sill (illustrations are of the Right Front Door Sill) spray the application area for fitment with your water or Tack solution. If temperature for fitment is cold there should be no need for a slip solution, but adjust to your own preference.

Peel off the piece from the backing, spraying the both sides lightly with tack solution as you expose it. Line up this piece by laying it as pictured below with the inner most edge butting up to the upright edge of inner door swage.

The outer edge that is towards you will fold over vertical contour. Using a combination of your thumb and squeegee contour the protection piece into the contours of the sill and over the outer edge making sure all moisture and air is removed from underneath the protection piece.



You may need to use a heat gun to help in conforming protector over swages if temperature too cold when fitting



**2.** Take the thin long rectangle piece of the Right Front Sill protector and using no solution or only your ISO/ water solution place/line this up with first peice's ends and apply to the bottom of the hump swage below your first installed piece. You will have slight gap between the two pieces of approx 1-2mm. There should be enough moisture there to nicely align this, then once again using thumb and/or squeegee remove any moisture/air from underneath protector piece.

**3.** Finally lay in your last piece ( the larger of the two rectangles). Butt this up to the second piece and conform over edge (this will fold underneath sill edge approx 20-30mm). Using your squeegee on the horizontal edge (edge closest to second piece) remove all moisture/air with overlapping strokes then concentrate on getting rid of all moisture/air as you roll/conform protector over the contoured edge.

It may help to lightly pull on the protector edge closest to you as you squeegee this edge over the contour. Continue squeegeeing the protector down and underneath the sill till it is all adhered to the sill area. Dry away any surface moisture left and visually check and feel for any moisture/air bubbles. Try to make sure you have removed all moisture. If there are any small bubbles they should evaporate through the material in four to seven days depending on temperature.

### Installing Rear Door Sill Protectors

Starting with the main sill area piece of your 3 piece set for the Rear sill (illustrations below are of the Right Rear Door Sill) follow the same procedure (1, 2, 3) that you have done for the Front Door Sill protection.

The alignment and layout of pieces is as shown in illustration of Right Rear Door Sill with protection applied (Fig 2.).

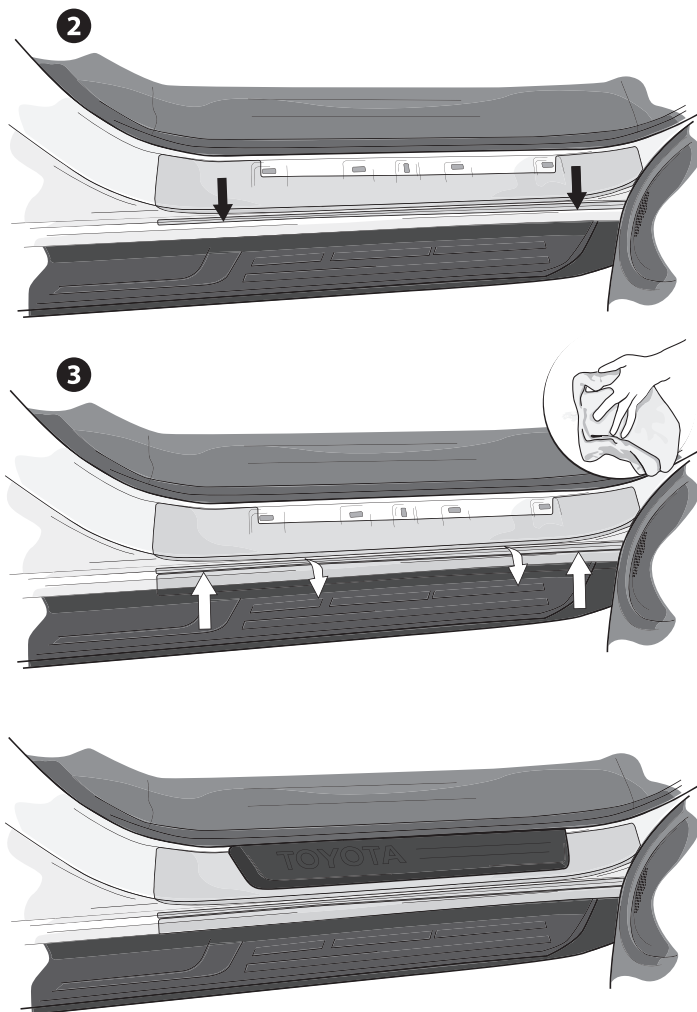
Again take your time and make sure you have removed all moisture/air from underneath all the pieces that make up the Sill protection.

Thouroughly dry all areas once installation is completed ensuring that all protection edges are down. Use your heat gun if needed for helping to conform protection into the appropriate areas.

**NOTE: Apply with good pressure and overlapping strokes to adhere protectors to Sill surfaces.**

**Ensure that all edges are adhering before the vehicle is driven.**

**Finally make sure you have installed all your plastic abrasion sill pieces on completion of fitting this Sill Protection kit.**



Once you have completed installation and completely dried the application area, re-install the plastic Toyota Abrasion Protector piece to complete your Front Door Sill protection

Fig 2.

