

VCP DOOR EDGE PROTECTION KIT

Paint Protection Kit for all vehicles

WHAT YOUR KIT CONTAINS

Your VCP Paint Protection Film (PPF) Vinyl Protection Kit should contain the following:

- 5x SunTek PPF-C (Clear Gloss) CAD Cut Door Edge Protection Pieces

| |
|--|
| |
| |
| |
| |
| |

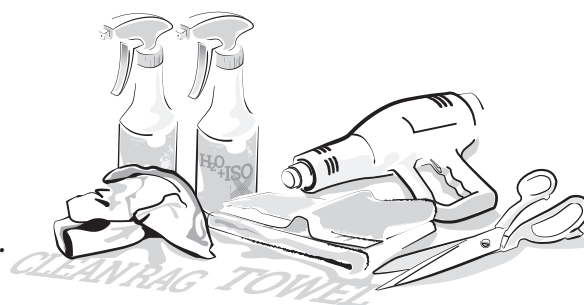
Kit Contents from left to right, top to bottom:
Door Edge Protectors (5 of)

Please check before going any further that this kit is for the correct Model and Year of vehicle that you have intended this application for. If you have any concerns as to quality or fit of this kit please contact VCP NZ before continuing.

FITTING INSTRUCTIONS

Please take note of all of the following for best results:

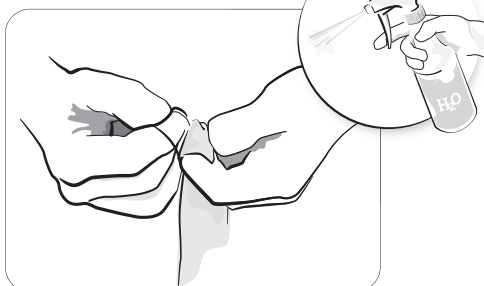
- **Please read the complete instructions before continuing your application.**
- **Prior to fitting this kit the vehicle should be cool and out of direct sunlight, preferably in a wind still area.**
- **Do not use any harsh cleaners or abrasives on the vehicles surface.**



You will may also need depending on application:

- Mist Sprayers containing just water, or a combination of water and Baby Shampoo mixed at a ratio of 4 drops per liter of water
- Mist Sprayer containing water and Isopropyl Alcohol mixed at a ratio of 10ml per litre of water
- Clean Rags
- Heat Gun
- Scissors or Art Style Knife
- Nitrile Gloves
- Clean Dry Towel

Note: Isopropalene Alcohol and water mixed at a ratio of 10% Isopropalene Alcohol and 90% water is helpful in aiding to tack down the protection film if needed. Nitrile gloves are also recommended for fitting PPF.



Spray both of your hands and surface of PPF with water before removing from backing and positioning onto vehicle.

Preparing Vehicle Surfaces

Thoroughly clean the area of your vehicle intended for application of PPF film. Make sure that the surface is totally clean from debris, stains and any loose residue, as they will otherwise become trapped between the paint protection film and vehicle, giving you a less satisfactory finish. We recommend cleaning with your usual car grooming wash from the top most part above where you will apply this application. Continue on downwards past where the protection film finishes so that all parts are clean in the intended application area. If paint work has nobs or rubbish in the finish it may need light claying to give a smooth layer for your application.

Re-clean the area with your water/soap mix and ISO (Isopropyl Alcohol) solution as this will help ensure getting rid of any stains plus help ready the surface for bonding with the paint protection film.

Handling of your Door Edge PPF Protector kit

Before removing PPF film from the backing paper, spray both of your hands liberally with your water/water & baby shampoo solution as pictured on page 1. Dry your hands with a clean dry towel making sure no towel fibres adhere to your hands.

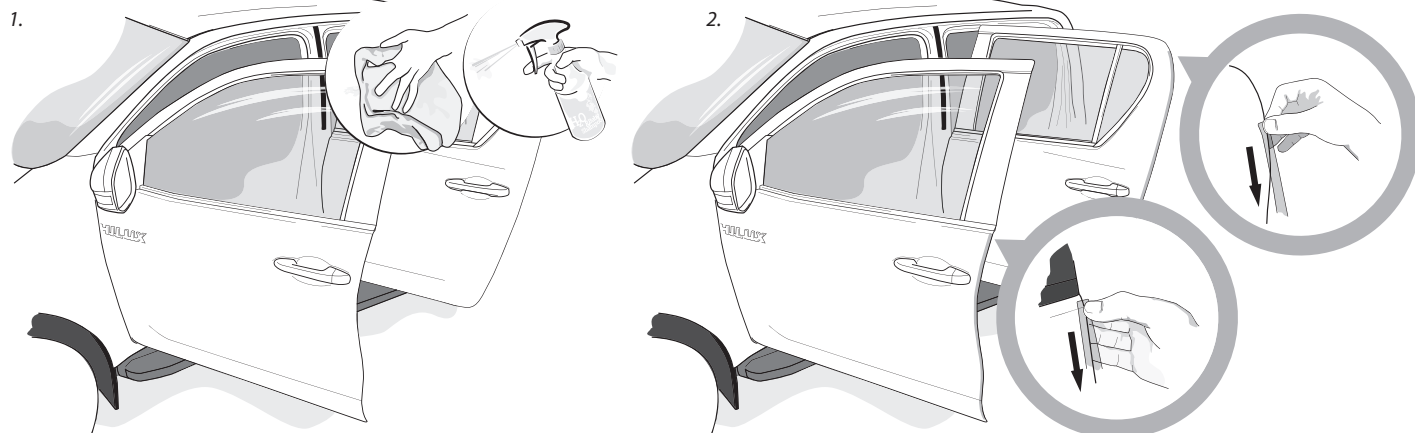
PLEASE NOTE: Fitment of Door Edge protection requires no solutions of any type.

If your Door edges have been cleaned properly the kit will adhere with out any need for assistance in tacking off.

Installing Door Edge Protectors

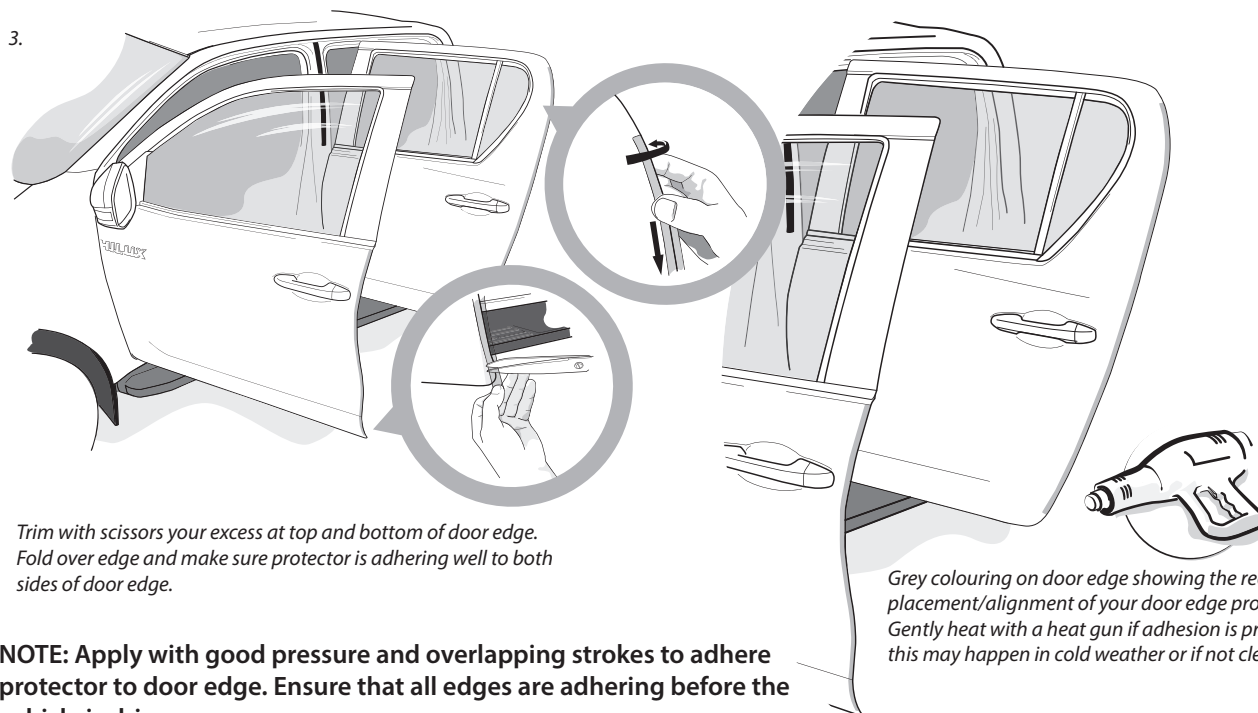
Making sure your hands are free from grease and dirt, prepare vehicle as previously described.

Cut with a pair of scissors or Art Knife (making sure to not cut yourself) a strip of door edge protection from the supplied kit. Follow application procedure below taking your time to align protector properly. **Note: this is a dry fitment.**



Make sure all door edges are super clean by doing a last wipe with ISO and a clean rag to ensure all grease, wax or other debris is totally removed.

Align the protector so that it is past where you wish it to start and at least halfway over on the outer visible edge of your door. Apply firm pressure with thumb to adhere protection to your door edge as you slide down the door aligning protection as you go. Take care to not over stretch protector. Pull backing away as you go, exposing only what you need as you proceed.



Trim with scissors your excess at top and bottom of door edge. Fold over edge and make sure protector is adhering well to both sides of door edge.

Grey colouring on door edge showing the recommended placement/alignment of your door edge protection. Gently heat with a heat gun if adhesion is proving tricky - this may happen in cold weather or if not cleaned properly.

NOTE: Apply with good pressure and overlapping strokes to adhere protector to door edge. Ensure that all edges are adhering before the vehicle is driven.